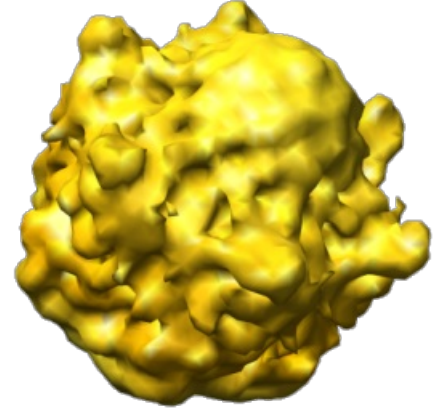


N-Ethyl Maleimide Sensitive Factor





Below is a **stack** (977 MB) of 31,592 images (**MRC/CCP4 format**) of N-ethyl maleimide sensitive factor (NSF [1]). The images were recorded on a Philips CM12 or FEI Tecnai F20 FEG electron microscope under low-dose conditions and between 2.0 and 4.0 μm underfocus. The pixel size of the final reconstruction is 3.5 Å. **Alignment parameters** determined by **Frealign** for each particle in the stack can also be found below, as well as a **reconstruction** of NSF (also **MRC/CCP4 format**; a B-factor of -1900 Å² and an 11 Å low-pass filter were applied using the program **bfactor** to sharpen the density) and a **script** to calculate a reconstruction using **Frealign**.

Please note that the handedness of the reconstruction calculated using the attached parameter files will be **WRONG**. The reconstruction must be mirrored (for example, with the MRC program label) to have the correct handedness. The reconstruction attached below has already been corrected.



References

1. Fürst, J, Sutton RB, Chen J, Brunger AT, Grigorieff N. 2003. **Electron cryomicroscopy structure of N-ethyl maleimide sensitive factor at 11 Å resolution**. EMBO J. 22:4365-74.

 nsf.par.tar.gz - Frealign parameter files	966.83 KB
 nsf_reconstruction_script.tar.gz - Script to calculate a reconstruction	1.35 KB
 nsf_50_b2300.mrc.gz - 3D reconstruction	2.23 MB
 nsf_stack.mrc.tar.gz - Particle image stacks	267.15 MB

Source URL: <http://grigoriefflab.janelia.org/nsfdata>